

# PEP Ergo Slab Props

High load-bearing capacity with low self-weight



Edition 11 | 2013

**PERI**

**Formwork Scaffolding Engineering**

Rudolf-Diesel-Strasse 19

89264 Weissenhorn

Germany

Tel. +49 (0)7309.950-0

Fax +49 (0)7309.951-0

info@peri.com

www.peri.com

**Important Notes**

Without exception, all current safety regulations must be observed in those countries where our products are used.

The photos shown in this brochure feature construction sites in progress. For this reason especially safety and anchor details cannot always be considered as conclusive or final. These are subject to the risk assessment carried out by the contractor.

Safety instructions and load specifications are to be strictly observed at all times. Separate structural calculations are required for any deviations from the standard design data.

The information contained herein is subject to technical changes in the interests of progress. Errors and typographical mistakes reserved.

# Content

## **PERI PEP Ergo**

- 2 The new generation of slab props
- 4 Well-developed features for safe handling
- 6 Well-developed features for faster forming
- 7 Well-developed features for a long service life
- 8 Tables
- 12 Components

# PERI PEP Ergo

## The new generation of slab props

**PERI PEP Ergo props are characterized by a further increase in load-bearing capacity and numerous trend-setting detailed solutions with low dead weight.**

The props have been developed in compliance with the Euro standard and have the approval of the DIBt (German Institute for Building Technology).

■ **High load-bearing capacity = fewer props**

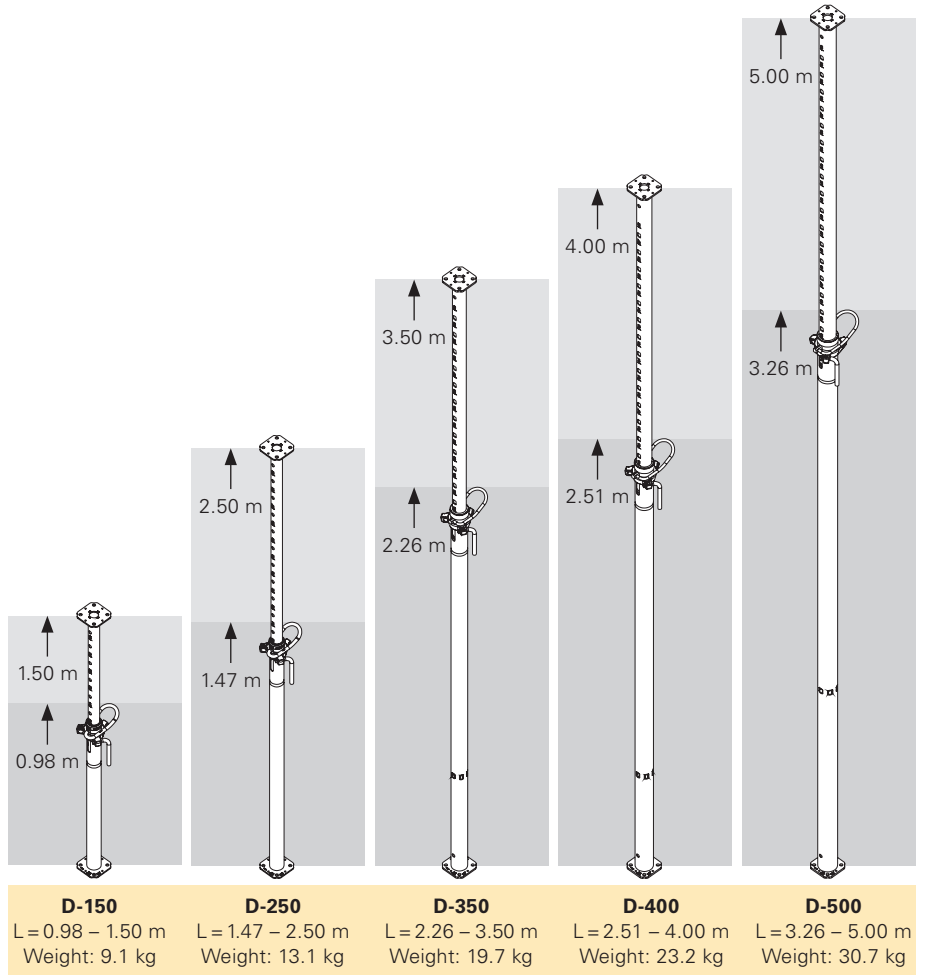
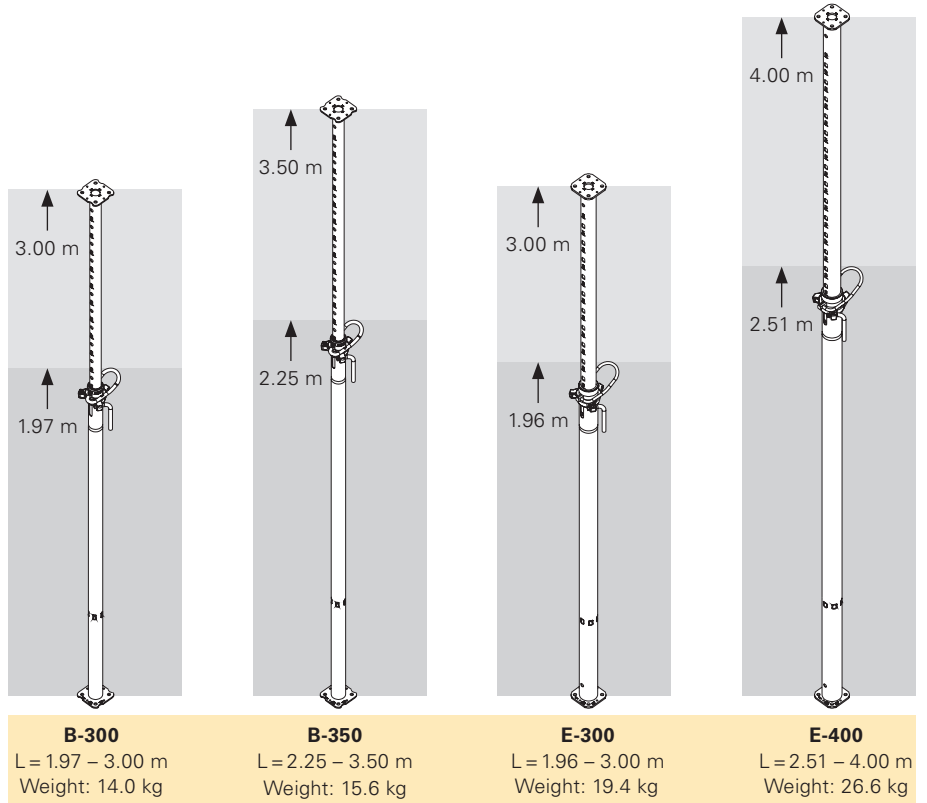
The capacity factor – defined as the load-bearing capacity to prop weight ratio – can reach up to 70 % above the values of comparable slab props.

PERI PEP Ergo props fully comply with Load Class B, D and E of EN 1065. Max. load-bearing capacity of up to 50 kN.



The PEP Ergo B-300 weighs only 13.9 kg and carries as maximum 30 kN.





# PERI PEP Ergo

## Well-developed features for safe handling

### ■ Fast forming

Due to the large adjustment range of 12 cm, the G-hook only seldom needs to be re-positioned. In addition, the proven, integrated measuring scale in form of stamped numbers on the inner tube ensures efficient and error-free working on the construction site.

### ■ Safe forming

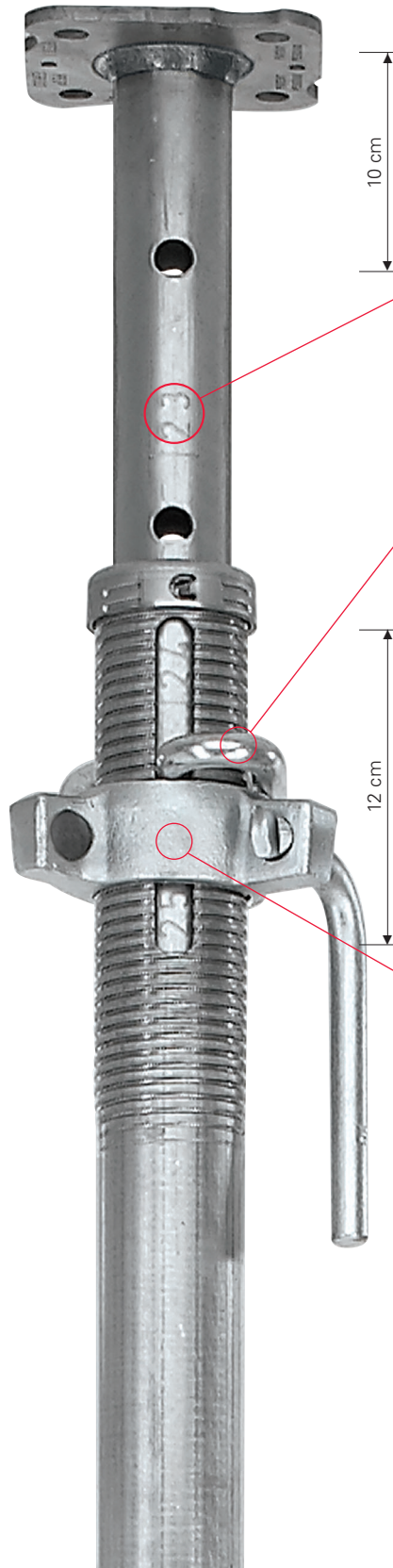
The integrated anti-pinch feature with a safety clearance of 10 cm at the top end protects the user against injury. The integrated fail-safe device prevents the inner tube from unintentionally falling out.

### ■ Simple logistics

Robust, always visible and easily readable stamped indicia on the head and base plates ensure fast and safe identification of the stored props also within the stacking pallets.



The length stamping on the PEP Ergo props is clearly readable.



### Low risk of injury

The integrated 10 cm safety clearance protects against injuries.

### Stamped measuring scale

For faster prop length adjustment. Stamped numbers on the inner tube show the overall length in dm, readable at the end of the outer tube.

### Good handling

The G-hook is ergonomically formed and can be securely clamped.

### Generous adjustment range

The large adjustment range of 12 cm makes frequent pin adjustment unnecessary.

### Three-wing nut

High-quality nut with hardened bearing surface and triple-start thread for easy loosening even under full load.



■ **New adjusting nut**

The form of the lowering nut dictates the direction of lowering the load and ensures that lowering is carefully carried out also under maximum load.



The adjusting nut has a generously-sized hammer striking face and determines the impact direction.



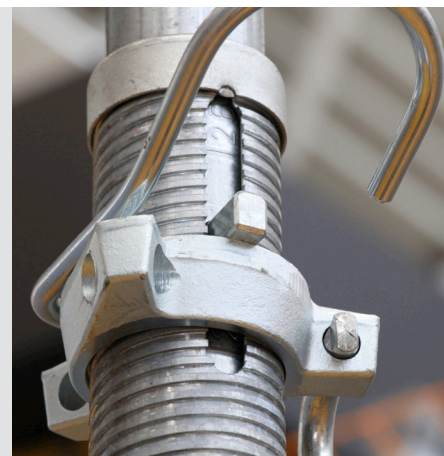
PERI Ergo props can be easily adjusted with the help of the captive handgrip.

■ **G-hook**

The shape of the patented G-hook combines an extremely high load-bearing capacity with optimal functionality and minimum weight.



Strong support profile and optimized anti-dropout safeguard.



Level bearing surface of the adjusting nut for easy release.

■ **Wingnut Spanner**

The wingnut spanner allows effortless and silent loosening the adjusting nut – even with maximum loaded props!



Ergonomic operations through offset wingnut spanner.



Safe operations due to hook on the wingnut spanner.

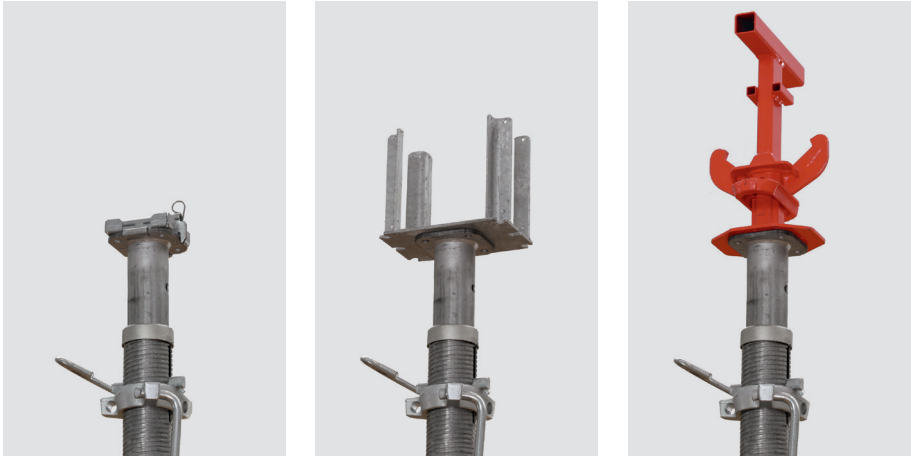


# PERI PEP Ergo

## Well-developed features for faster forming

### ■ Assembly of accessories

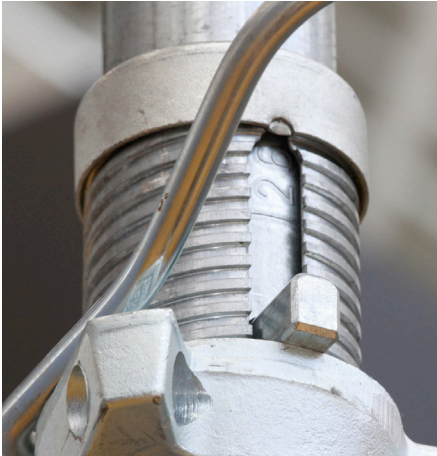
Naturally, the use of all PERI prop heads is guaranteed. It is also usable on both sides through the identical end plates on the inner and outer tubes.



### ■ Assembly aids

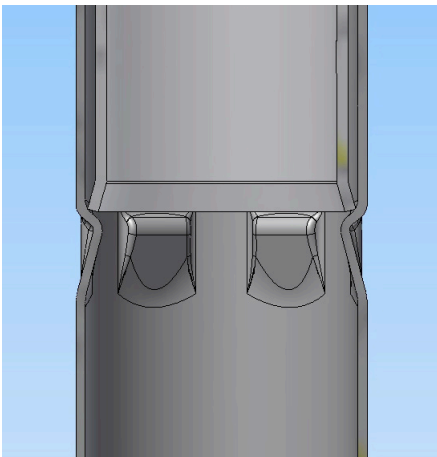
Tripod PEP Ergo, Universal Tripod and PEP Frames PRK are used as assembly aids.





### ■ Long service life

The complete galvanisation of all surfaces guarantees a long service life. The new closing nut additionally provides a unique repair capability. It allows defective inner and outer tubes to be easily and separately replaced.



### ■ Site-optimized enhanced robustness

The inner tube ends well beyond the base plate itself. This ensures that any damage to the outer tube does not hinder the free movement of the inner tube.



# Slab Props

## PEP Ergo B

### Permissible Prop Load [kN] according to Type Test

Extension Length [m]	PEP Ergo B-300		PEP Ergo B-350	
	L = 1.97 – 3.00 m		L = 2.25 – 3.50 m	
	Outer Tube Bottom	Inner Tube Bottom	Outer Tube Bottom	Inner Tube Bottom
2.00	30.0	30.0		
2.10	29.8	30.0		
2.20	27.0	30.0		
2.30	24.6	30.0	30.0	28.6
2.40	23.0	30.0	28.6	28.6
2.50	21.4	30.0	25.5	28.6
2.60	20.3	29.5	23.1	28.3
2.70	19.3	27.4	21.2	28.0
2.80	18.2	24.8	19.8	27.4
2.90	16.9	22.2	18.6	26.0
3.00	15.6	20.2	17.5	24.4
3.10			16.3	22.7
3.20			15.2	20.8
3.30			14.2	19.0
3.40			13.2	17.4
3.50			12.4	15.7

#### Note:

- PERI PEP Ergo B-300 and PEP Ergo B-350 props meet the load-bearing capacity requirements of Prop Class B as stipulated in DIN EN 1065.
- General Building Inspectorate Approval Z-8.311-934 issued by the German Institute for Building Technology (DIBt).

# Slab Props

## PEP Ergo D

### Permissible Prop Load [kN] according to Type Test

Extension Length [m]	PEP Ergo D-150		PEP Ergo D-250		PEP Ergo D-350		PEP Ergo D-400		PEP Ergo D-500	
	L = 0.98 – 1.50 m		L = 1.47 – 2.50 m		L = 2.26 – 3.50 m		L = 2.51 – 4.00 m		L = 3.26 – 5.00 m	
	Outer Tube Bottom	Inner Tube Bottom	Outer Tube Bottom	Inner Tube Bottom	Outer Tube Bottom	Inner Tube Bottom	Outer Tube Bottom	Inner Tube Bottom	Outer Tube Bottom	Inner Tube Bottom
1.00	30.0	30.0								
1.10	30.0	30.0								
1.20	30.0	30.0								
1.30	30.0	30.0								
1.40	28.4	30.0								
1.50	26.4	30.0	35.0	35.0						
1.60			35.0	35.0						
1.70			32.8	35.0						
1.80			30.7	35.0						
1.90			29.1	35.0						
2.00			28.1	35.0						
2.10			27.2	35.0						
2.20			26.4	34.0						
2.30			25.7	32.3	40.0	40.0				
2.40			24.2	29.4	40.0	40.0				
2.50			22.4	26.2	40.0	40.0				
2.60					37.8	40.0	40.0	40.0		
2.70					35.1	40.0	40.0	40.0		
2.80					33.0	40.0	40.0	40.0		
2.90					31.1	40.0	40.0	40.0		
3.00					29.6	40.0	40.0	40.0		
3.10					28.1	38.6	37.7	40.0		
3.20					26.9	34.7	35.6	40.0		
3.30					25.0	31.5	33.7	40.0	40.0	40.0
3.40					23.1	28.6	32.3	40.0	40.0	40.0
3.50					21.2	25.8	30.7	39.3	40.0	40.0
3.60							28.6	35.9	40.0	40.0
3.70							26.7	32.9	40.0	40.0
3.80							24.9	30.2	40.0	40.0
3.90							23.1	27.8	40.0	40.0
4.00							21.4	25.3	40.0	40.0
4.10									39.0	40.0
4.20									36.3	40.0
4.30									33.8	39.0
4.40									31.6	36.7
4.50									29.6	34.3
4.60									27.8	32.1
4.70									26.1	30.1
4.80									24.5	28.2
4.90									23.0	26.4
5.00									21.4	24.7

#### Note:

- PERI PEP Ergo D-150, PEP Ergo D-250, PEP Ergo D-350, PEP Ergo D-400 and PEP Ergo D-500 props fulfil Prop Class D load-bearing capacity requirements of DIN EN 1065.
- In addition, the PEP Ergo D-250 prop fulfils Prop Class B requirements as stipulated in DIN EN 1065.
- General Building Inspectorate Approval Z-8.311-934 for PERI PEP Ergo D-150 and PEP Ergo 250.
- General Building Inspectorate Approval Z-8.311-941 for PERI PEP Ergo D-350, PEP Ergo D-400 and PEP Ergo D-500.



# Slab Props

## PEP Ergo E

### Permissible Prop Load [kN] according to Type Test

Extension Length [m]	PEP Ergo E-300		PEP Ergo E-400	
	L = 1.96 – 3.00 m		L = 2.51 – 4.00 m	
	Outer Tube Bottom	Inner Tube Bottom	Outer Tube Bottom	Inner Tube Bottom
2.0	50.4	50.4		
2.1	50.4	50.4		
2.2	50.4	50.4		
2.3	50.4	50.4		
2.4	50.4	50.4		
2.5	48.9	50.4		
2.6	46.2	50.3	50.4	50.4
2.7	44.4	48.8	50.4	50.4
2.8	42.5	46.7	50.4	50.4
2.9	40.5	44.0	50.4	50.4
3.0	38.0	39.6	50.4	50.4
3.1			50.4	50.4
3.2			50.4	50.4
3.3			50.4	50.4
3.4			50.4	50.4
3.5			48.1	50.4
3.6			45.4	50.4
3.7			42.1	47.4
3.8			39.1	43.7
3.9			36.2	39.8
4.0			33.1	35.3

#### Note:

- PERI PEP Ergo E-300 and PEP Ergo E-400 props fulfil Prop Class E load-bearing capacity requirements of DIN EN 1065.
- General Building Inspectorate Approval Z-8.311-941 of the German Institute for Building Technology (DIBt).



# PEP Ergo Slab Props



Item no.	Weight kg
116780	14,000
116790	15,600
117230	9,110
116770	13,100
125130	19,400
125140	22,900
125150	30,400
125160	19,400
125170	26,600

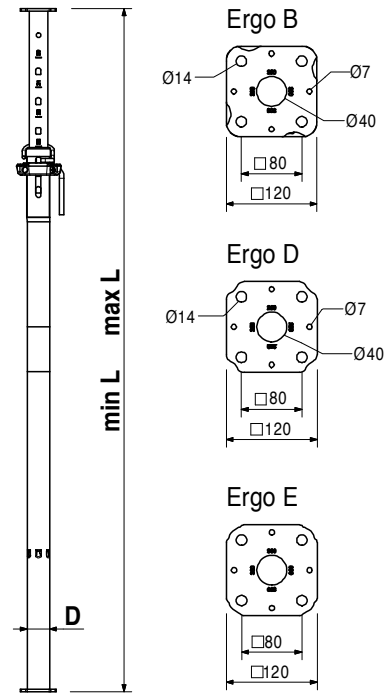
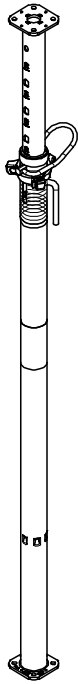
**Slab Props PEP Ergo**  
**Slab Prop PEP Ergo B-300**  
**Slab Prop PEP Ergo B-350**  
**Slab Prop PEP Ergo D-150**  
**Slab Prop PEP Ergo D-250**  
**Slab Prop PEP Ergo D-350**  
**Slab Prop PEP Ergo D-400**  
**Slab Prop PEP Ergo D-500**  
**Slab Prop PEP Ergo E-300**  
**Slab Prop PEP Ergo E-400**

Slab prop made of steel.

D	min. L	max. L
Ø 60.6	1970	3000
Ø 60.6	2250	3500
Ø 60.6	980	1500
Ø 60.6	1470	2500
Ø 71.0	2260	3500
Ø 76.5	2510	4000
Ø 83.0	3260	5000
Ø 76.5	1960	3000
Ø 83.0	2510	4000

**Note**

Permissible load: see PERI Design Tables.



111811	13,700
111812	13,900
112813	15,900
112814	17,800
111813	19,200
111814	20,100

**PEP Frames PRK, Steel**  
**PEP Frames PRK 62.5**  
**PEP Frames PRK 75**  
**PEP Frames PRK 100**  
**PEP Frames PRK 120**  
**PEP Frames PRK 137.5**  
**PEP Frames PRK 150**

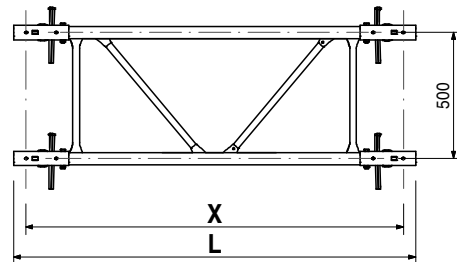
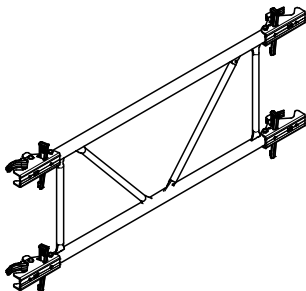
Stiffening frame for PEP slab props. Complete with captive wedge coupling.

L	X
723	625
848	750
1098	1000
1298	1200
1473	1375
1598	1500

**Note**

L = Loading Length

X = Axis Length



# PEP Ergo Slab Props



Item no.	Weight kg
112718	15,300
111815	15,400
112788	15,600
111816	16,100
111817	16,300
111818	17,700
111819	18,700

- PEP Frames PRK**
- PEP Frames PRK 200**
- PEP Frames PRK 201.5**
- PEP Frames PRK 210**
- PEP Frames PRK 225**
- PEP Frames PRK 230**
- PEP Frames PRK 266**
- PEP Frames PRK 296**

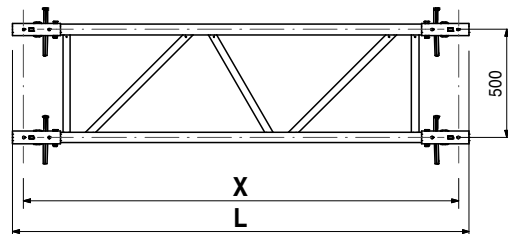
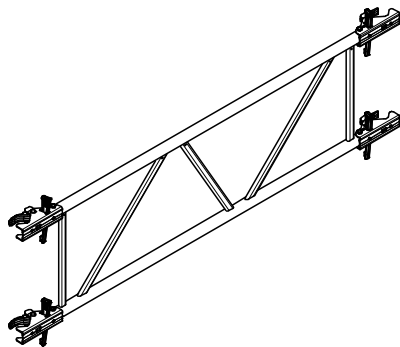
Stiffening frame for PEP slab props. Complete with captive wedge coupling.

L	X
2098	2000
2113	2015
2198	2100
2348	2250
2398	2300
2758	2660
3058	2960

**Note**

L = Loading Length

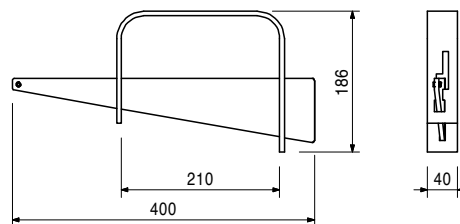
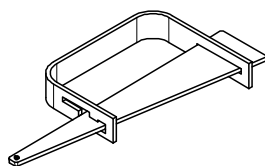
X = Axis Length



027940	1,840
--------	-------

**Brace Clamp, galv., 48 – 76 mm**

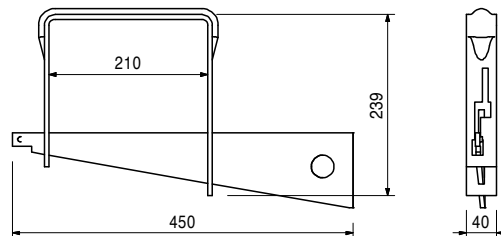
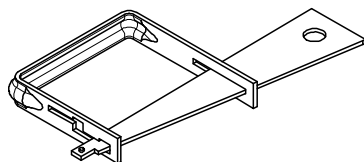
For assembly of 3 x 15 cm stiffening boards at slab props Ø 48 – 76 mm.



027790	2,460
--------	-------

**Brace Clamp HL, galv., 76 – 120 mm**

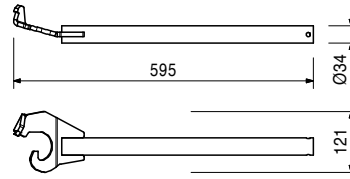
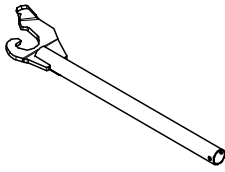
For assembly of 3 x 15 cm stiffening boards at slab props Ø 76 – 89 mm and 100 x 100 mm to 120 x 120 mm.



Item no.	Weight kg
118345	1,500

## Wing Nut Spanner PEP

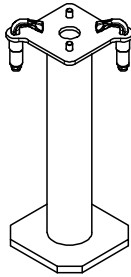
Allows effortless loosening of the adjusting nut with maximum loaded props.



027310	8,900
--------	-------

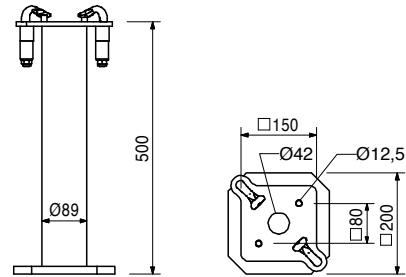
## Base MP 50

For use with slab props with an end plate thickness of 6 – 10 mm. With clamped quick-release fastener.



### Note

Permissible load: see PERI Design Tables.



103434	38,500
103429	45,300

## Pallets RP-2, galv.

**Pallet RP-2 80 x 120, galv.**

**Pallet RP-2 80 x 150, galv.**

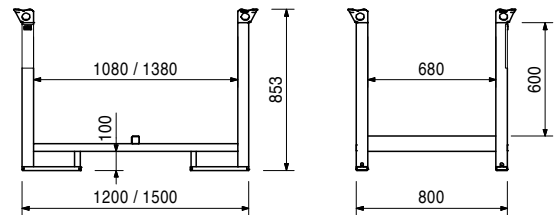
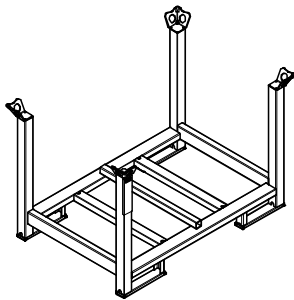
For stacking and transportation of formwork and scaffolding components.

### Note

Follow Instructions for Use!

### Technical Data

Permissible load-bearing capacity 1.5 t.

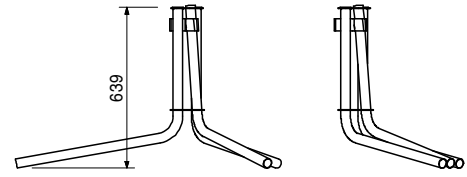
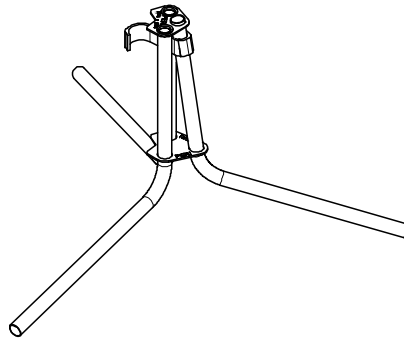


# PEP Ergo Slab Props

Item no.	Weight kg
107152	5,810

**Tripod PEP Ergo, galv.**  
Erection aid for PEP Ergo Slab Props with  $\varnothing$  44 – 64 mm.

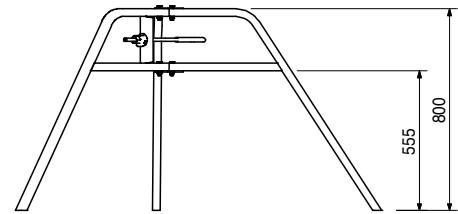
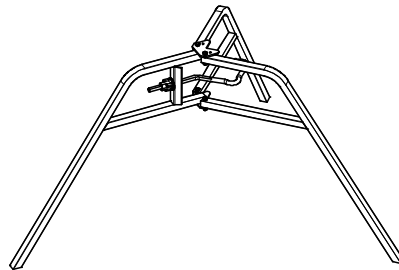
**Note**  
Only use as erection aid!



028000	9,170
--------	-------

**Universal Tripod, galv.**  
Erection aid for slab props with  $\varnothing$  48 – 120 mm and 120 x 120 mm. Can also be used in combination with MULTIPROP MP slab props and all slab props with Base MP 50.

**Note**  
Only use as erection aid!





**01 Germany**  
**PERI GmbH**  
 Rudolf-Diesel-Strasse 19  
 89264 Weissenhorn  
 info@peri.com  
 www.peri.com



**02 France**  
 PERI S.A.S.  
 77109 Meaux Cedex  
 peri.sas@peri.fr  
 www.peri.fr

**03 Switzerland**  
 PERI AG  
 8472 Ohringen  
 info@peri.ch  
 www.peri.ch

**04 Spain**  
 PERI S.A.U.  
 28110 Algete - Madrid  
 info@peri.es  
 www.peri.es

**05 Belgium/Luxembourg**  
 N.V. PERI S.A.  
 1840 Londerzeel  
 info@peri.be  
 www.peri.be

**06 Netherlands**  
 PERI Holding B.V.  
 5480 AH-Schijndel  
 info@peri.nl  
 www.peri.nl

**07 USA**  
 PERI Formwork Systems, Inc.  
 Elkridge, MD 21075  
 info@peri-usa.com  
 www.peri-usa.com

**08 Indonesia**  
 PT Beton Perkasa Wijaksana  
 Jakarta 10210  
 bpw@betonperkasa.com  
 www.peri.com

**09 Italy**  
 PERI S.p.A.  
 20060 Basiano  
 info@peri.it  
 www.peri.it

**10 Japan**  
 PERI Japan K.K.  
 Tokyo 103-0015  
 info@perijapan.jp  
 www.perijapan.jp

**11 United Kingdom/Ireland**  
 PERI Ltd.  
 Rugby, CV23 0AN  
 info@peri.ltd.uk  
 www.peri.ltd.uk

**12 Turkey**  
 PERI Kalip ve Iskeleleri Sanayi  
 ve Ticaret Ltd.  
 Esenyurt / İstanbul 34510  
 info@peri.com.tr  
 www.peri.com.tr

**13 Hungary**  
 PERI Kft.  
 1181 Budapest  
 info@peri.hu  
 www.peri.hu

**14 Malaysia**  
 PERI Formwork Malaysia Sdn. Bhd.  
 43300 Seri Kembangan,  
 Selangor Darul Ehsan  
 info@perimalaysia.com  
 www.perimalaysia.com

**15 Singapore**  
 PERI Asia Pte Ltd  
 Singapore 387355  
 pha@periasia.com  
 www.periasia.com

**16 Austria**  
 PERI Ges.mbh  
 3134 Nußdorf ob der Traisen  
 office@peri.at  
 www.peri.at

**17 Czech Republic**  
 PERI spol. S r.o.  
 252 42 Jesenice u Prahy  
 info@peri.cz  
 www.peri.cz

**18 Denmark**  
 PERI Danmark A/S  
 2670 Greve  
 peri@peri.dk  
 www.peri.dk

**19 Finland**  
 PERI Suomi Ltd. Oy  
 05460 Hyvinkää  
 info@perisuomi.fi  
 www.perisuomi.fi

**20 Norway**  
 PERI Norge AS  
 3036 Drammen  
 info@peri.no  
 www.peri.no

**21 Poland**  
 PERI Polska Sp. z o.o.  
 05-860 Płochocin  
 info@peri.com.pl  
 www.peri.com.pl

**22 Sweden**  
 PERIform Sverige AB  
 30262 Halmstad  
 peri@periform.se  
 www.periform.se

**23 Korea**  
 PERI (Korea) Ltd.  
 Seoul 135-936  
 info@perikorea.com  
 www.perikorea.com

**24 Portugal**  
 Pericofragens Lda.  
 2790-326 Queijas  
 info@peri.pt  
 www.peri.pt

**25 Argentina**  
 PERI S.A.  
 B1625GPA Escobar – Bs. As.  
 info@peri.com.ar  
 www.peri.com.ar

**26 Brazil**  
 PERI Formas e  
 Escoramentos Ltda.  
 Vargem Grande Paulista – SP  
 info@peribrasil.com.br  
 www.peribrasil.com.br

**27 Chile**  
 PERI Chile Ltda.  
 Colina, Santiago de Chile  
 perichile@peri.cl  
 www.peri.cl

**28 Romania**  
 PERI România SRL  
 077015 Balotești  
 info@peri.ro  
 www.peri.ro

**29 Slovenia**  
 PERI Agency  
 2000 Maribor  
 peri.slo@triera.net  
 www.peri.com

**30 Slovakia**  
 PERI spol. s. r.o.  
 903 01 Senec  
 info@peri.sk  
 www.peri.sk

**31 Australia**  
 PERI Australia Pty. Ltd.  
 Glendenning NSW 2761  
 info@periaus.com.au  
 www.periaus.com.au

**32 Estonia**  
 PERI AS  
 76406 Saku vald  
 Harjumaa  
 peri@peri.ee  
 www.peri.ee

**33 Greece**  
 PERI Hellas Solely Owned Ltd.  
 194 00 Koropi  
 info@perihellas.gr  
 www.perihellas.gr

**34 Latvia**  
 PERI SIA  
 2118 Salaspils novads, Rigas rajons  
 info@peri-latvija.lv  
 www.peri-latvija.lv

**35 United Arab Emirates**  
 PERI (L.L.C.)  
 Dubai U.A.E.  
 perillc@perime.com  
 www.perime.com

**36 Canada**  
 PERI Formwork Systems, Inc.  
 Bolton, ON – L7E 1K1  
 info@peri.ca  
 www.peri.ca





- |   |   |   |  |  |
|---|---|---|--|--|
| <p><b>37 Lebanon</b><br/>PERI Lebanon Sarl<br/>90416 – Jdeideh<br/>lebanon@peri.de</p>  | <p><b>44 Russian Federation</b><br/>OOO PERI<br/>142407, Noginsk District<br/>moscow@peri.ru<br/>www.peri.ru</p>                                | <p><b>51 Turkmenistan</b><br/>PERI Kalıp ve İskeleleri<br/>Aşgabat<br/>ahmet.kadioglu@peri.com.tr<br/>www.peri.com.tr</p> | <p><b>57 Saudi Arabia</b><br/>PERI Saudi Arabia Ltd.<br/>21463 Jeddah<br/>info@peri.com.sa<br/>www.peri.com.sa</p>     | <p><b>64 Nigeria</b><br/>PERI Nigeria Ltd.<br/>Lagos<br/>info@peri.ng<br/>www.peri.ng</p>                                      |
| <p><b>38 Lithuania</b><br/>PERI UAB<br/>02300 Vilnius<br/>info@peri.lt<br/>www.peri.lt</p>                                    | <p><b>45 South Africa</b><br/>PERI (Pty) Ltd<br/>7600 Stellenbosch<br/>info@peri.co.za<br/>www.peri.co.za</p>                                   | <p><b>52 Belorussia</b><br/>IOOO PERI Belarus<br/>220100 Minsk<br/>info@peri.by<br/>www.peri.by</p>                       | <p><b>58 Qatar</b><br/>PERI Qatar LLC<br/>P.O.Box: 31295 - Doha<br/>info@periqatar.com<br/>www.peri.qa</p>             | <p><b>65 Oman</b><br/>PERI (L.L.C.)<br/>Muscat<br/>perimct@perime.com<br/>www.perime.com</p>                                   |
| <p><b>39 Morocco</b><br/>PERI S.A.U.<br/>Tanger<br/>info@peri.ma<br/>www.peri.ma</p>  | <p><b>46 Ukraine</b><br/>PERI Ukraina<br/>07400 Brovary<br/>peri@peri.ua<br/>www.peri.ua</p>  | <p><b>53 Croatia</b><br/>PERI oplate i skele d.o.o.<br/>10 250 Lučko-Zagreb<br/>info@peri.com.hr<br/>www.peri.com.hr</p>  | <p><b>59 Algeria</b><br/>SarI PERI<br/>Kouba 16092, Alger<br/>info@peri.com<br/>www.peri.com</p>                       | <p><b>66 Colombia</b><br/>PERI S.A.S. Colombia<br/>Briceño, Cundinamarca<br/>peri.colombia@peri.com.co<br/>www.peri.com.co</p> |
| <p><b>40 Israel</b><br/>PERI Formwork<br/>Engineering Ltd.<br/>Rosh Ha'ayin, 48104<br/>info@peri.co.il<br/>www.peri.co.il</p> | <p><b>47 Egypt</b><br/>PERI Branch Office<br/>11341 Nasr City /Cairo<br/>info@peri.com.eg<br/>www.peri.com.eg</p>                               | <p><b>54 India</b><br/>PERI (India) Pvt Ltd<br/>Mumbai – 400064<br/>info@peri.in<br/>www.peri.in</p>                      | <p><b>60 Albania</b><br/>PERI Representative Office<br/>Tirane<br/>info@peri.com.tr<br/>www.peri.com.tr</p>            | <p><b>67 Philippines</b><br/>PERI-Asia Philippines, INC.<br/>Makati City<br/>info@peri.com.ph<br/>www.peri.com.ph</p>          |
| <p><b>41 Bulgaria</b><br/>PERI Bulgaria EOOD<br/>1839 Sofia<br/>peri.bulgaria@peri.bg<br/>www.peri.bg</p>                     | <p><b>48 Serbia</b><br/>PERI – Oplate d.o.o.<br/>22310 Šimanovci<br/>office@peri.rs<br/>www.peri.rs</p>   | <p><b>55 Jordan</b><br/>PERI GmbH - Jordan<br/>11947 Amman<br/>jordan@peri.com<br/>www.peri.com</p>                       | <p><b>61 Peru</b><br/>PERI Peruana S.A.C.<br/>Villa El Salvador, Lima<br/>contacto@peri.com.pe<br/>www.peri.com.pe</p> | <p><b>68 Hong Kong</b><br/>PERI (Hong Kong) Limited<br/>Hong Kong SAR, PRC<br/>bob.dover@periasia.com<br/>www.perihk.com</p>   |
| <p><b>42 Iceland</b><br/>Armar ehf.<br/>220 Hafnarfjörður<br/>armar@armar.is<br/>www.armar.is</p>                             | <p><b>49 Mexico</b><br/>PERI Cimbras y Andamios,<br/>S.A. de C.V.<br/>Estado de México, Huehuetoca<br/>info@peri.com.mx<br/>www.peri.com.mx</p> | <p><b>56 Kuwait</b><br/>PERI Kuwait W.L.L.<br/>13011 Kuwait<br/>info@peri.com.kw<br/>www.peri.com.kw</p>                  | <p><b>62 Panama</b><br/>PERI Panama Inc.<br/>0832-00155 Panama City<br/>info@peri.com.pa<br/>www.peri.com.pa</p>       | <p><b>69 Namibia</b><br/>PERI (Pty.) Ltd.<br/>Windhoek<br/>windhoek@peri.na<br/>www.peri.na</p>                                |
| <p><b>43 Kazakhstan</b><br/>TOO PERI Kazakhstan<br/>050000 Almaty<br/>peri@peri.kz<br/>www.peri.kz</p>                        | <p><b>50 Azerbaijan</b><br/>PERI Representative Office<br/>Baku<br/>peribaku@peri.com.tr<br/>www.peri.com.tr</p>                                | <p><b>63 Angola</b><br/>Pericofragens, Lda.<br/>Luanda<br/>renato.portugal@peri.pt<br/>www.peri.pt</p>                    | <p><b>70 Mozambique</b><br/>PERI (Pty.) Ltd.<br/>Matola<br/>maputo@peri.co.mz<br/>www.peri.co.mz</p>                   |  |

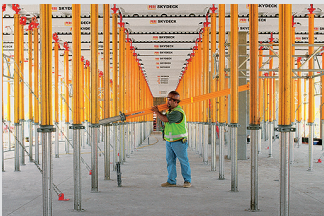
# The optimal System for every Project and every Requirement



Wall Formwork



Column Formwork



Slab Formwork



Climbing Systems



Tunnel Formwork



Bridge Formwork



Shoring Systems



Construction Scaffold



Facade Scaffold



Industrial Scaffold



Access



Protection Scaffold



System-Independent Accessories



Services



**PERI GmbH**  
**Formwork Scaffolding Engineering**  
 Rudolf-Diesel-Strasse 19  
 89264 Weissenhorn  
 Germany  
 Tel. +49 (0)7309.950-0  
 Fax +49 (0)7309.951-0  
 info@peri.com  
 www.peri.com